

STANDARD DEPARTURE
CHART - INSTRUMENT
(SID) - ICAO

TRANSITION ALTITUDE
10000 FT

ASTANA TOWER 135.5
ASTANA APPROACH 124.6
ASTANA RADAR 120.7
ASTANA ATIS(EN) 129.5
ASTANA ATIS(RU) 128.3

OLGAS 5E, BOLSU 5E,
EDANO 5E, BANOS 4E,
GURPI 4E, KOKON 5E,
OSROL 6E VETUB 5E,
DIDAL 5E, VAGEM 5E,
DIDAL 2F.

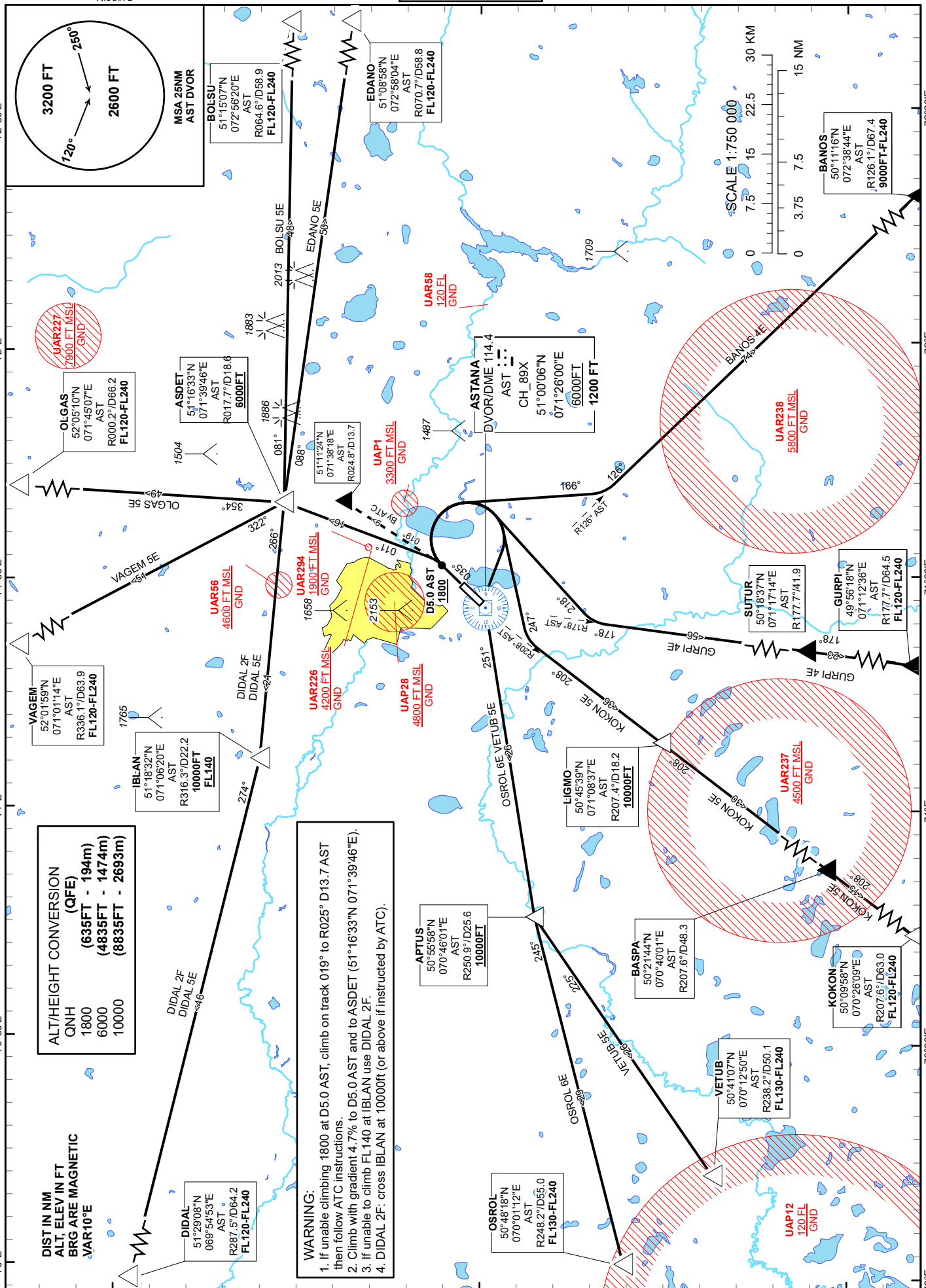
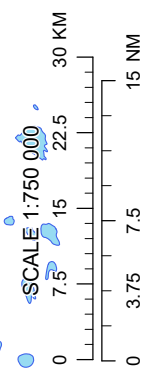
ASTANA
NURSULTAN NAZARBAYEV
INTERNATIONAL AIRPORT
RWY 04

N.06.19

CHANGE: OSROL and VETUB ALT.

ALT/HEIGHT CONVERSION
(QFE)
QNH (635FT - 194m)
1800
6000
10000
BRG ARE MAGNETIC
VAR 10°E

WARNING:
1. If unable climbing 1800 at D5.0 AST, climb on track 019° to R025° D13.7 AST then follow ATC instructions.
2. Climb with gradient 4.7% to D5.0 AST and to ASDET (51°16'33"N 071°39'46"E).
3. If unable to climb FL140 at IBLAN use DIDAL 2F.
4. DIDAL 2F: cross IBLAN at 10000ft (or above if instructed by ATC).



STANDARD DEPARTURE ROUTES - INSTRUMENT (SID) ASTANA RWY 04
OLGAS 5E After take-off climb straight ahead to 1800 or above, at D5.0NM outbound DME AST turn LEFT on track 011° to ASDET (R017.7° D18.6 AST), turn LEFT on track 354° to OLGAS (R000.2° D66.2 AST). Cross ASDET at 6000 or above. Cross OLGAS at FL120-FL240
BOLSU 5E After take-off climb straight ahead to 1800 or above, at D5.0NM outbound DME AST turn LEFT on track 011° to ASDET (R017.7° D18.6 AST), turn right on track 081° to BOLSU (R064.6° D58.9 AST). Cross ASDET at 6000 or above. Cross BOLSU at FL120-FL240
BANOS 4E After take-off climb straight ahead to 1800 or above, at D5.0NM outbound DME AST turn RIGHT on track 166° until intercept R126°AST, then proceed on track 126° to BANOS (R126.1° D67.4 AST). Cross BANOS at FT9000-FL240
KOKON 5E After take-off climb straight ahead to 1800 or above, at D5.0NM outbound DME AST turn RIGHT on track 247° until intercept R208°AST, then proceed on track 208° to LIGMO (R207.4° D18.2 AST), after crossing LIGMO proceed on track 208° to BASPA (R207.6° D48.3 AST), proceed on track 208° to KOKON (R207.6° D63.0 AST). Cross LIGMO at 10000 or above. Cross KOKON at FL120-FL240
OSROL 6E After take-off climb straight ahead to 1800 or above, at D5.0NM outbound DME AST turn RIGHT to DVOR/DME AST. After crossing DVOR/DME AST proceed on track 251° to APTUS (R250.9° D25.6 AST). After crossing APTUS, turn LEFT on track 245° to OSROL (R248.2° D55.0 AST). Cross DVOR/DME AST at 6000 or above. Cross APTUS at 10000 or above. Cross OSROL at FL130-FL240
VETUB 5E After take-off climb straight ahead to 1800 or above, at D5.0NM outbound DME AST turn RIGHT to DVOR/DME AST. After crossing DVOR/DME AST proceed on track 251° to APTUS (R250.9° D25.6 AST). After crossing APTUS turn LEFT on track 225° to VETUB (R238.2° D50.1 AST). Cross DVOR/DME AST at 6000 or above. Cross APTUS at 10000 or above. Cross VETUB at FL130-FL240
DIDAL 5E After take-off climb straight ahead to 1800 or above, at D5.0NM outbound DME AST turn LEFT on track 011° to ASDET (R017.7° D18.6 AST), turn LEFT on track 266° to IBLAN (R316.3° D22.2 AST), then turn RIGHT on track 274° to DIDAL (R287.5° D64.2 AST). Cross ASDET at 6000 or above. Cross IBLAN at FL140 or above. Cross DIDAL at FL120-FL240
DIDAL 2F After take-off climb straight ahead to 1800 or above, at D5.0NM outbound DME AST turn LEFT on track 011° to ASDET (R017.7° D18.6 AST), turn LEFT on track 266° to IBLAN (R316.3° D22.2 AST), then turn RIGHT on track 274° to DIDAL (R287.5° D64.2 AST). Cross ASDET at 6000 or above. Cross IBLAN at 10000FT (or above if instructed by ATC). Cross DIDAL at FL120-FL240
VAGEM 5E After take-off climb straight ahead to 1800 or above, at D5.0NM outbound DME AST turn LEFT on track 011° to ASDET (R017.7° D18.6 AST), turn LEFT on track 322° to VAGEM (R336.1° D63.9 AST). Cross ASDET at 6000 or above. Cross VAGEM at FL120-FL240
EDANO 5E After take-off climb straight ahead to 1800 or above, at D5.0NM outbound DME AST turn LEFT on track 011° to ASDET (R017.7° D18.6 AST), turn RIGHT on track 088° to EDANO (R070.7° D58.8 AST). Cross ASDET at 6000 or above. Cross EDANO at FL120-FL240
GURPI 4E After take-off climb straight ahead to 1800 or above, at D5.0NM outbound DME AST turn RIGHT on track 218° until intercept R178°AST, then proceed on track 178° to SUTUR (R177.7° D41.9 AST), after crossing SUTUR proceed on track 178° to GURPI (R177.7° D64.5 AST). Cross GURPI at FL120-FL240